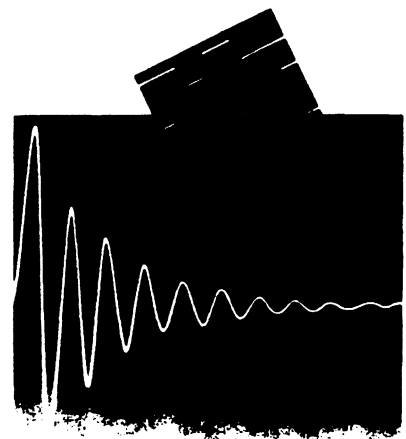


TekTMS

Test Management System

Installation of TekTMS Products



Copyright © 1991 Tektronix, Inc. All rights reserved. Contents of this publication may not be reproduced in any form without the written permission of Tektronix, Inc.

Products of Tektronix, Inc. and its subsidiaries are covered by U.S. and foreign patents and/or pending patents.

Printed in U.S.A. Specification and price change privileges are reserved.

If acquired subject to FAR or DFARS, the following shall apply, as applicable:

Unpublished – rights reserved under the copyright laws of the United States.

RESTRICTED RIGHTS LEGEND

Use, duplication, or disclosure by the Government is subject to restrictions as set forth in subparagraph (c)(1)(ii) of The Rights in Technical Data and Computer Software clause at DRARS 52.227-7013.

Microsoft, MS, MS-DOS, CodeView, and the Microsoft logo are registered trademarks, and Windows is a trademark of Microsoft Corporation.

Table of Contents

Introduction	1
Quick Installation Procedure for TekTMS Products	1
Detailed Installation Procedure for TekTMS Products	2
Product Installation and Operating Information	2
S3FT100 TekTMS Interactive Program Generator (IPG)	2
S3FT200 and S3FT300 Instrument Driver Libraries	2
Controllers and Bus Communications Drivers	2
Information Needed During Installation	3
For S3FT100 (TekTMS/IPG):	3
For S3FT200 and S3FT300 (Instrument Driver Libraries):	3
For S3FT110 (TekTMS/RTG):	3
Help During Installation	4
Exiting the Installation Process Before Completion	4
Overview of Installation Procedure	5
The Detailed Installation Procedure	5
READ.ME Dialog Box Displays	7
Installation Questions Dialog Box Displays	9
S3FT100 (TekTMS/IPG) Installation Questions Dialog Boxes	12
S3FT200 (VXI ISDs) Installation Questions Dialog Boxes	13
S3FT300 (GPIB ISDs) Installation Questions Dialog Boxes	15
S3FT110 (TekTMS/RTG) Installation Questions Dialog Boxes	17

Introduction

Disk 1 of each TekTMS product contains a common INSTALL.EXE Windows application program for installing any TekTMS product. This program requires Windows 3.0. The application program assumes that your hardware system environment can support the TekTMS product(s) being loaded, and any software applications needed by the product(s) already are installed.

This booklet contains two installation procedures: a *Quick Installation Procedure for TekTMS Products* and a *Detailed Installation Procedure for TekTMS Products*. The quick installation procedure is for users with extensive experience in installing application software in a Windows environment and only need to know how to start the INSTALL program. The detailed installation procedure is for users who need more information about what to expect and what they will see during installation. It also provides information for users of the quick installation procedure when a question or problem arises during installation.

Quick Installation Procedure for TekTMS Products

To install TekTMS products:

1. Insert Disk 1 of any TekTMS product into the A: or B: drive.
2. Type *win* and press *RETURN*. The Windows Program Manager display should appear.
3. Click on the **F**ile command. The File menu should appear.
4. Click on the **R**un... command. The Run dialog box should appear.
5. In the **Command Line:** edit box, type *d:\install* (where *d* is the drive letter a or b) and click on **OK**. A TekTMS INSTALL program Product Selection dialog box should appear.
6. At this point follow the instructions in each INSTALL dialog box that appears until installation is complete. If you have a question or problem during the installation, click on **H**elp in the dialog box, or refer to the *Detailed Installation Procedure for TekTMS Products*.

Note

If you choose to read the READ.ME files when prompted during installation, you must close the files after reading them to continue the installation procedure. Close the files by double clicking on the NOTEPAD control box in its upper left corner.

Detailed Installation Procedure for TekTMS Products

Product Installation and Operating Information

S3FT100 TekTMS Interactive Program Generator (IPG)

There are two versions of S3FT100 available for installation. They are both named TEK_TMS.EXE, but they are contained on separate product disks. An Environment Selection dialog box appears during product installation to make the choice of version. For information about the Environment Selection dialog box, see the *S3FT100 (TekTMS/IPG) Installation Questions Dialog Boxes* topic later in this section.

S3FT200 and S3FT300 Instrument Driver Libraries

Each ISD file in the library controls one type of instrument. The file name identifies the instrument. Some instruments have two types of drivers. One for interactive instrument control when creating tests and a smaller, faster, runtime version for program generation without interactive control.

S3FT100 (TekTMS/IPG) does not store path names to Instrument Driver (.ISD) and Help (.HLP) files. Thus, .ISD and .HLP files must be installed in the same directory as their associated Test Procedure or Executable files.

Controllers and Bus Communications Drivers. To use the ISDs for instrument communications, the appropriate bus communications drivers must be installed on the controller. The supported controllers are:

Tektronix VX4530, VX4535, VX5530, and VX5535
Colorado Data Systems (CDS) 73A-161

- a. The Tektronix controllers are shipped with the necessary drivers. When using CDS controllers, run Windows in Real Mode. When CDS controllers are used with GPIB instruments, GPIB.COM must be used for bus communications.
- b. If non-VXI controllers are used, S3FT100 should be run in the Windows Standard or Enhanced Mode using the National Instruments GPIB.DLL driver. If the GPIB.DLL driver is used, the Environment Selection dialog box mentioned in S3FT100 paragraphs above, must have a **Yes** response when it appears during installation of S3FT100. If GPIB.DLL is not available, S3FT100 should be run in Windows Real Mode using GPIB.COM for bus communications.

Information Needed During Installation

Following are some questions you will be asked or selections you need to make when installing the listed products. Where applicable, you may answer the question by accepting the default answer or provide one of your own.

S3FT100 (TekTMS/IPG):

An Environment Selection dialog box asks if you are planning to use the National Instruments .DLL dynamic link library version of the GPIB driver software? The answers are **Yes** or **No**.

The .DLL library can be used only when **TekTMS/IPG** interpretive test procedures using GPIB instruments are running under Windows in the Standard or Enhanced mode. If this is your intended operating mode, you should select **Yes**. The .DLL library will not run with translated tests or in the Windows Real mode.

You should select **No** if you are: 1) running TekTMS/RTG translated test procedures with GPIB instruments using Tektronix imbedded VXI controllers, or 2) you are running CDS controllers in Windows Real mode, or 3) you are controlling VXI instruments using CDS controllers running in Windows Real mode. When you select **No**, you must use GPIB.COM driver software.

Where do you want to load the .EXE files? You can enter a pathname. The default is the drive and directory where Windows is loaded.

S3FT200 and S3FT300 (Instrument Driver Libraries):

Which ISDs do you want loaded? You can select files from a list box.

Which Runtime versions of ISDs do you want loaded? You can select files from a list box.

Where do you want to load .ISD files? You can enter a pathname. Default is TEKISD.

S3FT110 (TekTMS/RTG):

Where do you want to load the .EXE files? You can enter a pathname. The default is the drive and directory where Windows is loaded.

Where do you want to load the .LIB files. You can enter a pathname. The default is the drive and directory where the 'C' libraries are loaded.

Which Runtime Library model size do you want? You can select Medium or Large.

Where do you want to load the .H files. You can enter a pathname. The default is the drive and directory where the 'C' *include* files are loaded.

Do you want INSTALL to modify your AUTOEXEC.BAT file? If you select NO, the INSTALL program creates a **TEKBAT.NEW** file containing what your AUTOEXEC.BAT should look like. You will need to modify the file yourself using the information in **TEKBAT.NEW**. Default is YES.

Help During Installation

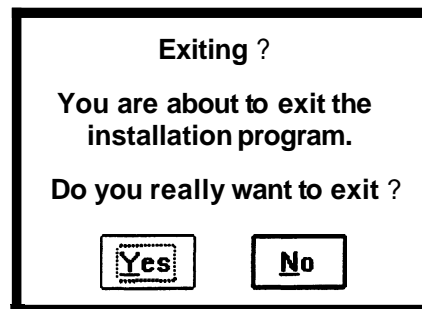
If you need more information about what action is required for an INSTALL program dialog box, click on **Help** in the displayed dialog box. Clicking on Help causes a standard Windows Help dialog box similar to the following to appear.



When finished reading the dialog box information, return to the installation process by double-clicking on the control box in its upper left corner.

Exiting the Installation Process Before Completion

Most INSTALL dialog boxes contain an **Exit** push button. If you click on it accidentally, or because you want to exit the installation process before completion, the following dialog box appears giving you a chance to cancel or continue the action.



Overview of Installation Procedure

The detailed installation procedure applies when loading one or more TekTMS products. The description contains appropriate comments about the order in which dialog boxes appear when loading more than one product. Essentially the pattern followed by the installation procedure is:

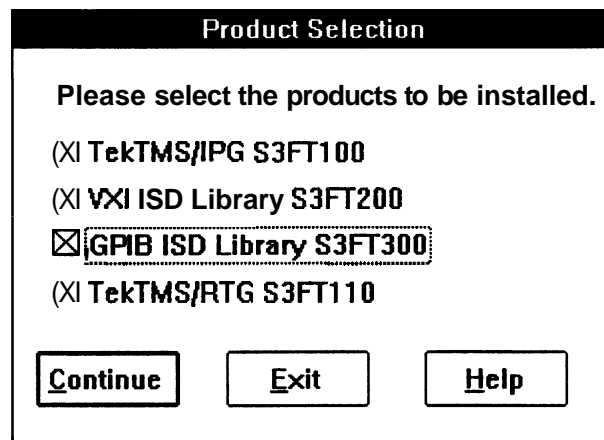
- Select the **product(s)** to install
- Select the diskette drive to use for the installation
- Select and read the **READ.ME** files
- Answer installation questions
- Load the files
- Modify the **AUTOEXEC.BAT** file

Depending upon the product(s) loaded, there may not be any **READ.ME** files, or a need to modify your **AUTOEXEC.BAT** file.

The Detailed Installation Procedure

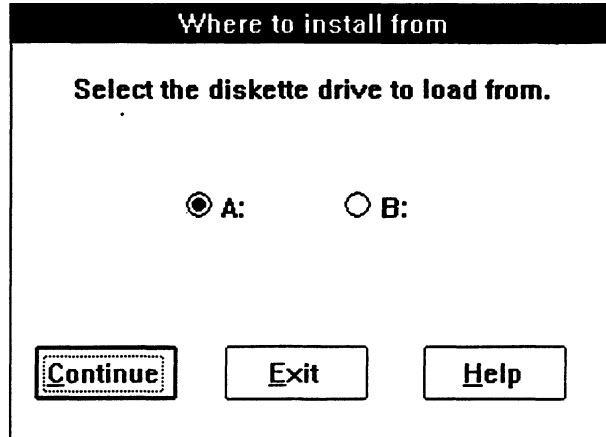
To install one or more TekTMS products:

1. Insert Disk 1 of any TekTMS product into the A: or B: drive.
2. Type *win* and press *RETURN*. The Windows Program Manager display should appear.
3. Click on the **File** command. The File menu should appear.
4. Click on the **Run...** command. The Run dialog box should appear.
5. In the **Command Line:** edit box, type *d:\install* (where *d* is the drive letter a or b) and click on **OK**. An **INSTALL** program Product Selection dialog box similar to the following should appear (the dialog box may have only one product selected when it appears).

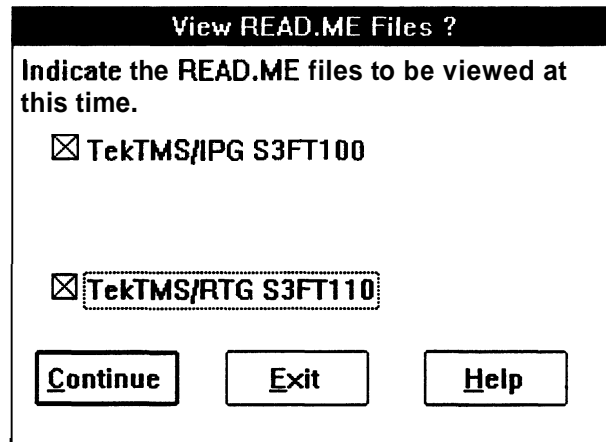


6. Click on one or more check boxes to select the product(s) you want to load (Xed boxes are selected). If you want to change your selection(s), clicking on an Xed check box deselects it.

7. Click on **Continue**. The following 'Where to install from' dialog box should appear.



8. Click on one of the mutually exclusive drive radio buttons to select the drive you will use to install the selected products, then click on **Continue**. A View READ.ME Files? dialog box similar to the following should appear (the check boxes are not selected when the dialog box first appears).

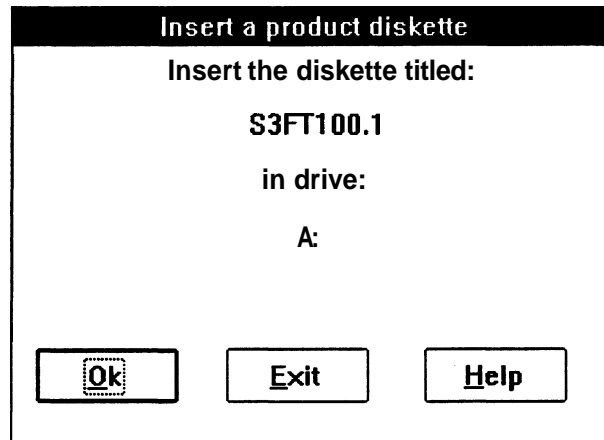


9. Click on the check boxes to select the READ.ME files you want to read (box is Xed). More than one check box can be selected at the same time. Clicking on an Xed check box deselects it. When finished selecting, click on **Continue**.

Note

At this point the INSTALL program becomes unique depending upon the product(s) being installed and whether you selected READ.ME files for reading.

10. The next display that appears should be an 'Insert product diskette' dialog box similar to the following.



The product nomenclature displayed in this dialog box is determined by the INSTALL program as follows:

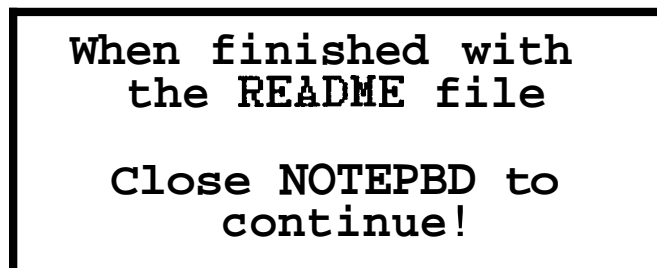
- If READ.ME files were selected, the dialog box displays the disk nomenclature for the first READ.ME file selected (i.e., S3FT100, S3FT110, etc.).
- If no READ.ME files were selected, the dialog box displays the disk nomenclature (i.e., S3FT100, S3FT200, etc.) for the first product questions to be asked.

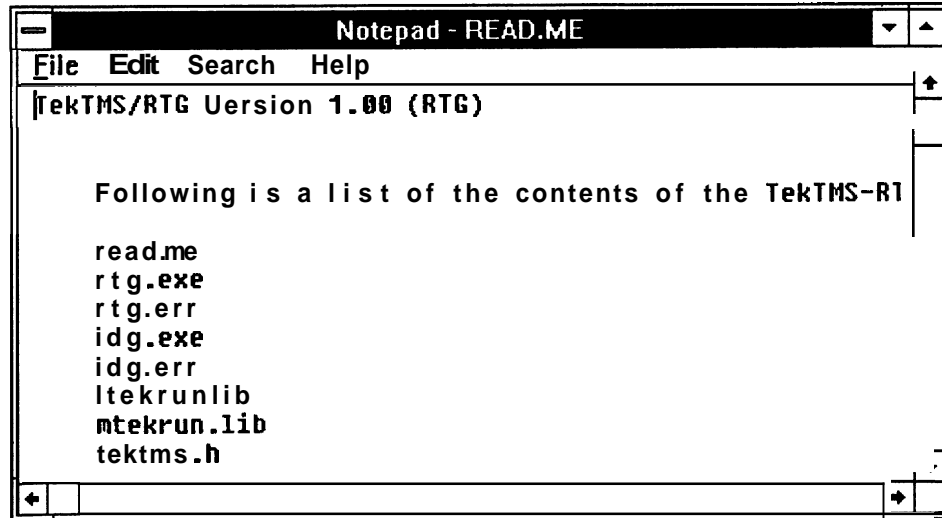
11. Insert the disk requested by the dialog box and click on **OK**.

If you didn't select READ.ME files, or the products your installing don't have READ.ME files, go to step 14 under the *Installation Questions Dialog Box Displays* topic ; otherwise, continue to step 12 under the *READ.ME Dialog Box Displays* topic below.

READ.ME Dialog Box Displays

12. If you selected a READ.ME file in step 9., the INSTALL program displays the following message and opens the Windows NOTEPAD utility to display the first READ.ME file.





This example is part of the READ.ME file for the S3FT110 product. To read the complete file, use the scroll bar on the right side of the window. When you finish reading the file, close the NOTEPAD window by double clicking on its control-menu box in the upper left corner.

If you selected another READ.ME file, the next display will ask you to insert another product disk. When you have inserted the disk and selected **OK**, the next READ.ME file appears and the process continues until all selected READ.ME files have been displayed.

13. After all product disks with selected READ.ME files have been inserted and read, and NOTEPAD is closed, the next dialog box to appear should be the same as the first dialog box that appears in step 14 in the *Installation Questions Dialog Box Displays* topic below.

Installation Questions Dialog Box Displays

14. The first dialog box in the questions part of the INSTALL program appears after the last **READ.ME** file displayed by **NOTEPAD** is closed. This dialog box may be a questions dialog box for a particular product, or a message asking for a specific product disk to be inserted into a diskette drive. If the dialog box is a message to insert a product disk, follow the instructions and continue.

Like **READ.ME** dialog boxes, questions dialog boxes are unique to the programs being installed. Questions dialog boxes appear for each product being installed. The **INSTALL** program tells the user when to install another specific program disk for installation questions.

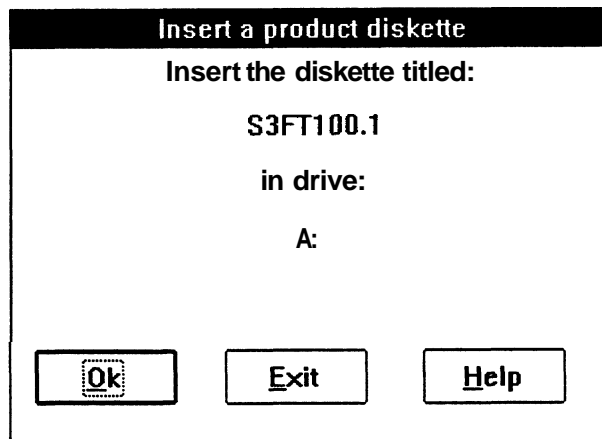
15. If **S3FT100** is being installed, go to step 15 under the **S3FT100 (TekTMS/IPG)** Installation Questions Dialog Boxes; otherwise, go to step 16.

16. If **S3FT200** is being installed, go to step 16 under the **S3FT200 (TekTMS VXI/ISDs)** Installation Questions Dialog Boxes; otherwise, go to step 17.

17. If **S3FT300** is being installed go to step 17 under the **S3FT300 (TekTMS GPIB ISDs)** Installation Questions Dialog Boxes; otherwise, go to step 18.

18. If **S3FT110** is being installed, go to step 18 under the **S3FT110 (TekTMS/RTG)** Installation Questions Dialog Boxes; otherwise, go to step 19.

19. When all questions for the products being loaded are answered, an 'Insert a product diskette' dialog box similar to the following appears to prompt you to insert the first disk to start the actual files installation process.

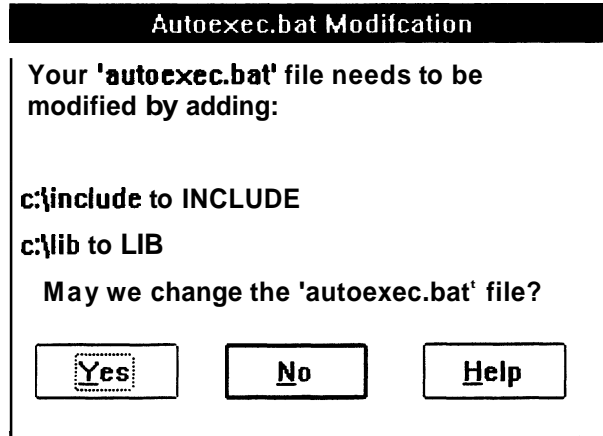


20. Insert the requested disk and click on **OK**. At this point the **INSTALL** program starts copying the disk files onto your system. As each file is copied, a Copying File List Box appears and displays the following three comment lines with current information about the file being processed:

Copying File:
To File Name:
Bytes left to copy:

If there is more than one disk for the product being installed, or more than one product being installed, an 'Insert a product diskette' dialog box appears every time another disk needs to be inserted and this step repeats until all selected product disks are copied.

21. If S3FT110 is being installed, the following Autoexec.bat Modification dialog box appears; otherwise, go to step 23.



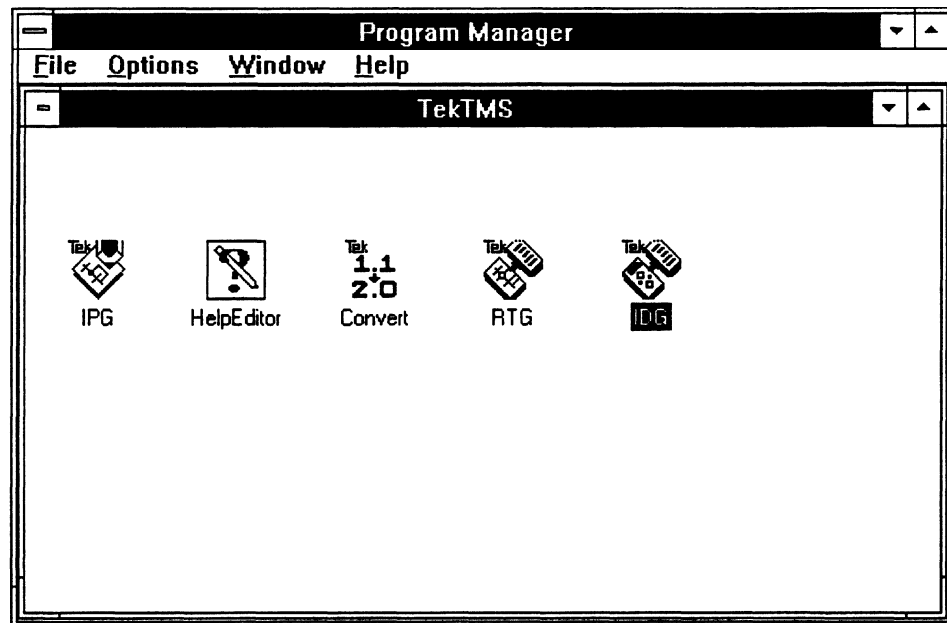
22. If you click on **No**, your AUTOEXEC.BAT file is copied to TEKBAT.NEW and that file is changed. This provides you a sample file showing the changes that must be made to your AUTOEXEC.BAT file in order to run the installed S3FT110 program. When this action is finished, the installation complete dialog box in step 23 appears.

If you click on **Yes**, your AUTOEXEC.BAT file is changed, then the installation complete dialog box in step 23 appears.

23. When all installation actions are finished, the following installation complete dialog box appears.



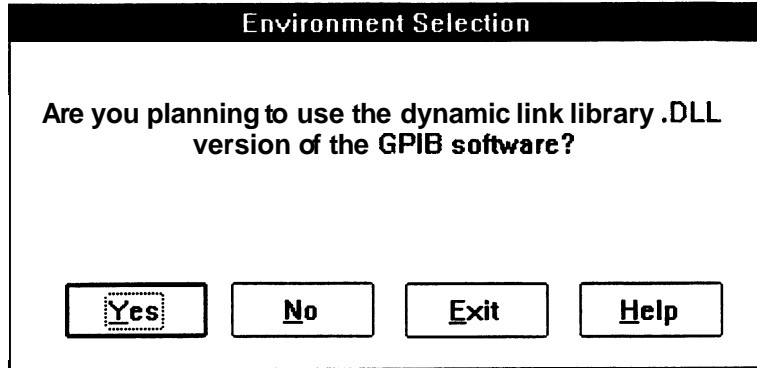
24. Click on **OK** to return to the Windows Program Manager. When the Program Manager display appears, it should be overlaid with a TekTMS Application Group window similar to the following example. The program icons in your display may appear in different locations than those shown in this window.



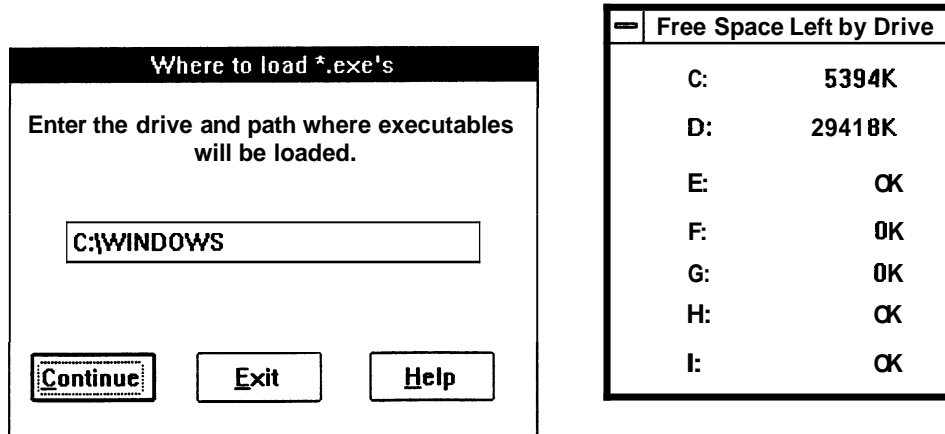
25. Only those products that are installed will have program icons displayed. Any program can be started by double clicking on its icon.

S3FT100 (TekTMS/IPG) Installation Questions Dialog Boxes

15. When S3FT100 is being installed, the following Environment Selection dialog box is the first question dialog box displayed. For information about making this selection, click on Help, or refer to the *S3FT100* topic under the *Information Needed During Installation* topic earlier in this section.



a. Click on Yes or No. The following 'Where to load *.exe's' dialog box should appear.



Note

The OK entry in the 'Free Space Left by Drive' display indicates zero Kbytes of free space rather than the term 'OK'. This comment applies to all like displays that appear in this manual.

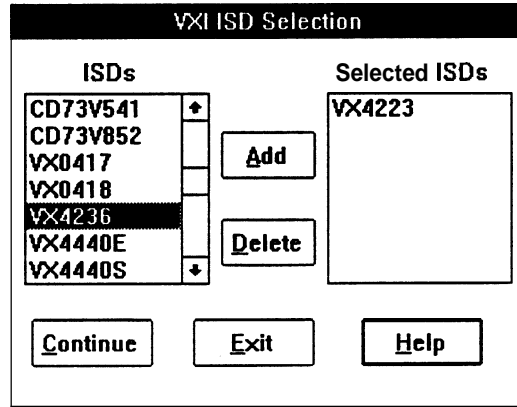
b. The drive and directory name shown in this dialog box are selected by the INSTALL program in the following order: 1) C:\WINDOWS if there is enough space; otherwise, 2) the drive with available space using a TEKMS directory (i.e., D:\TEKMS).

If the displayed drive and path entries are acceptable, click on **Continue**; otherwise, change the entries, then click on **Continue**.

Return to step 16 under the *Installation Questions Dialog Box Displays* topic.

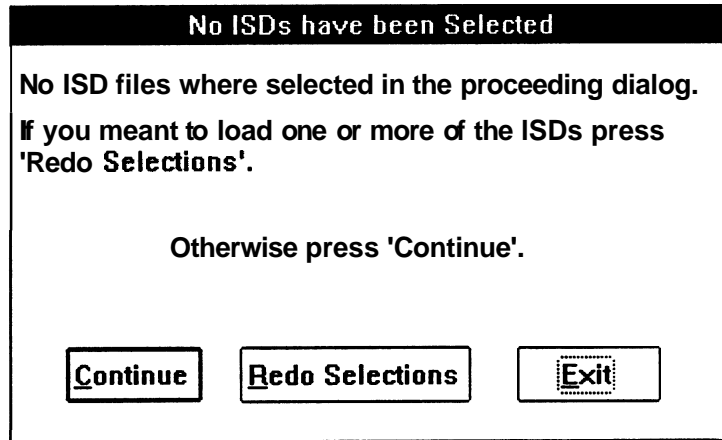
S3FT200 (VXI ISDs) Installation Questions Dialog Boxes

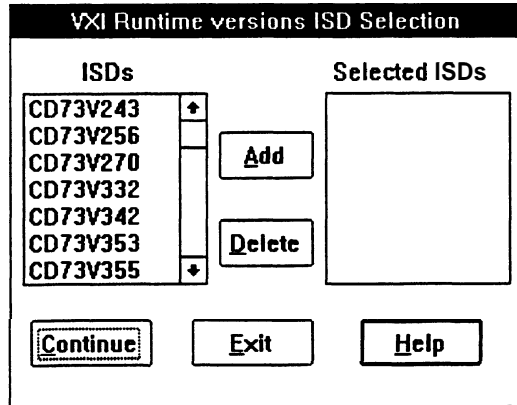
16. When S3FT200 is being installed, a VXI ISD Selection dialog box similar to the following is the first question dialog box display to appear (when the dialog box first appears, the **Selected ISDs** edit box is empty).



Free Space Left by Drive	
C:	2986K
D:	30112K
E:	OK
F:	OK
G:	OK
H:	OK
I:	OK

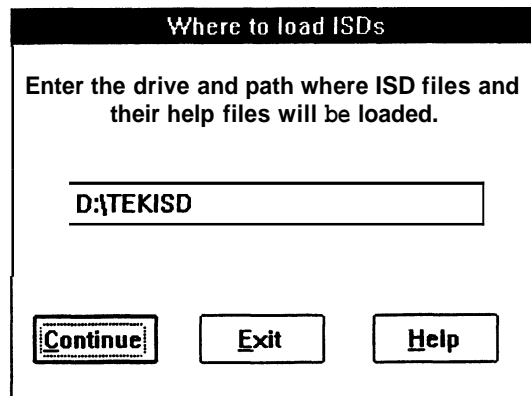
a. Double click on each ISD file name in the **ISDs** list box to select it for installation. As each name is selected, its name appears in the **Selected ISDs** edit box (see dialog box above). To remove a name, click on it in the **Selected ISDs** edit box and click on **Delete**. To add a name, click on it in the **ISDs** edit box, then click on **Add**. When all file names have been selected, click on **Continue**. If no ISDs were selected, the following dialog box appears giving you a chance to return to the selection dialog box; otherwise, the 'VXI Runtime versions ISD Selection' dialog box on the next page should appear.





Free Space Left by Drive	
C:	2986K
D:	30112K
E:	0K
F:	OK
G:	OK
H:	OK
I:	OK

b. Double click on each ISD file name in the **ISDs** list box to select it for installation. As each name is selected, its name appears in the **Selected ISDs** edit box (see dialog box above). To remove a name, click on it in the **Selected ISDs** edit box and click on **Delete**. To add a name, click on it in the **ISDs** edit box, then click on **Add**. When all file names have been selected, click on **Continue**. If no ISDs were selected, the dialog box following step 16a appears giving you a chance to return to the selection dialog box; otherwise, the following 'Where to load ISDs' dialog box should appear.



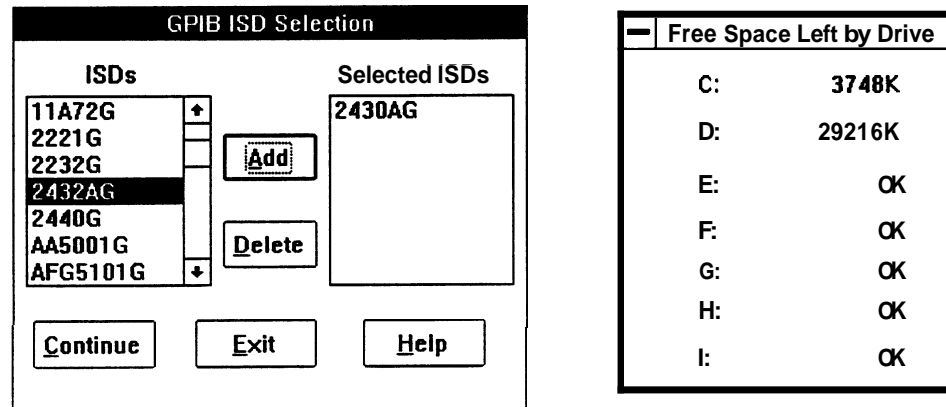
c. The drive and directory name shown in this dialog box are selected by the INSTALL program in the following order: 1) D:\TEKISD if there is enough space; otherwise, 2) the drive with available space using a TEK TMS directory (i.e., D:\TEKTMS).

If the displayed drive and path entries are acceptable, click on **Continue**; otherwise, change the entries, then click on **Continue**.

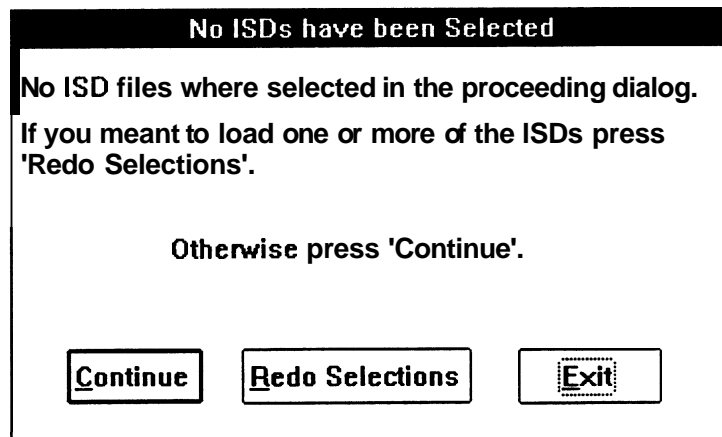
Return to step 17 under the *Installation Questions Dialog Box Displays* topic.

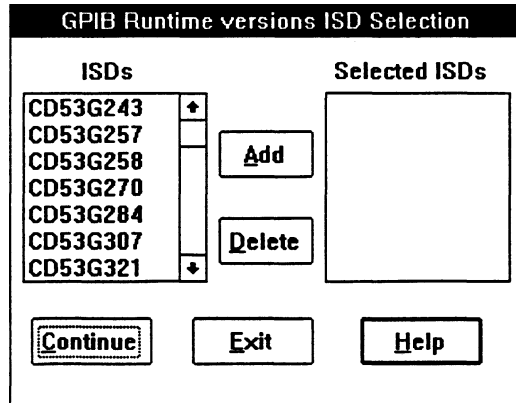
S3FT300 (GPIB ISDs) Installation Questions Dialog Boxes

17. When S3FT300 is being installed, a GPIB ISD Selection dialog box similar to the following is the first question dialog box display to appear (when the dialog box first appears, the **Selected ISDs** edit box is empty).



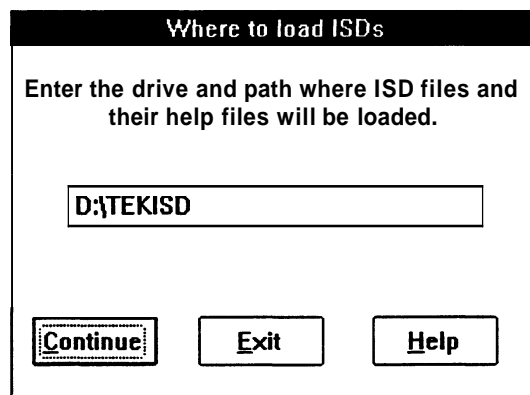
a. Double click on each ISD file name in the **ISDs** list box to select it for installation. As each name is selected, its name appears in the **Selected ISDs** edit box (see dialog box above). To remove a name, click on it in the **Selected ISDs** edit box and click on **Delete**. To add a name, click on it in the **ISDs** edit box, then click on **Add**. When all file names have been selected, click on **Continue**. If no ISDs were selected, the following dialog box appears giving you a chance to return to the selection dialog box; otherwise, the 'GPIB Runtime versions ISD Selection' dialog box on the next page should appear.





Free Space Left by Drive	
C:	3748K
D:	29216K
E:	OK
F:	OK
G:	OK
H:	OK
I:	OK

b. Double click on each ISD file name in the **ISDs** list box to select it for installation. As each name is selected, its name appears in the **Selected ISDs** edit box (see dialog box above). To remove a name, click on it in the **Selected ISDs** edit box and click on **Delete**. To add a name, click on it in the **ISDs** edit box, then click on **Add**. When all file names have been selected, click on **Continue**. If no ISDs were selected, the dialog box following step 17a appears giving you a chance to return to the selection dialog box; otherwise, the following 'Where to load ISDs' dialog box should appear.



c. The drive and directory name shown in this dialog box are selected by the INSTALL program in the following order: 1) D:\TEKISD if there is enough space; otherwise, 2) the drive with available space using a TEK TMS directory (i.e., D:\TEKTMS).

If the displayed drive and path entries are acceptable, click on **Continue**; otherwise, change the entries, then click on **Continue**.

Return to step 18 under the *Installation Questions Dialog Box Displays* topic.

S3FT110 (TekTMS/RTG) Installation Questions Dialog Boxes

17. When S3FT110 is being installed, the following 'Where to load *.exe's/Free Space Left by Drive' dialog box is the first question dialog box to appear.

Note

If S3FT100 is being installed, this question is already asked and won't be asked again. If S3FT100 isn't being installed, this question is asked when S3FT110 is installed.

The 'Where to load *.exe's' dialog box has a title bar 'Where to load *.exe's'. The main text says 'Enter the drive and path where executables will be loaded.' Below this is a text input field containing 'C:\WINDOWS'. At the bottom are three buttons: 'Continue', 'Exit', and 'Help'.

Free Space Left by Drive	
C:	5394K
D:	29418K
E:	0K
F:	0K
G:	0K
H:	0K
I:	0K

a. The drive and directory name shown in this dialog box are selected by the INSTALL program in the following order depending upon available space: 1) C:\WINDOWS; otherwise, 2) the drive with available space using a TEKMS directory (i.e., D:\TEKMS).

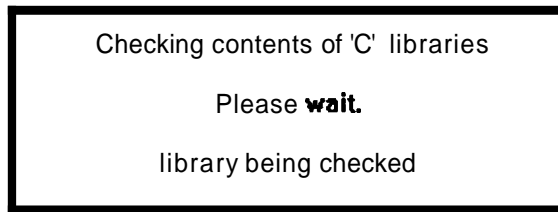
If the displayed drive and path entries are acceptable, click on Continue; otherwise, change the entries, then click on Continue. The following 'Where to load *.lib's' dialog box should appear.

The 'Where to load *.lib's' dialog box has a title bar 'Where to load *.lib's'. The main text says 'Enter the drive and path where libraries will be loaded.' Below this is a text input field containing 'c:\lib'. There are two checkboxes: 'Load Medium Model' (unchecked) and 'Load Large Model' (checked). At the bottom are three buttons: 'Continue', 'Exit', and 'Help'.

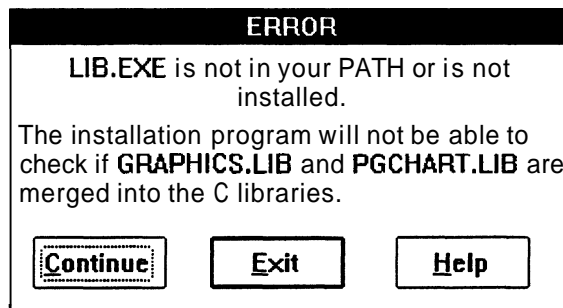
Free Space Left by Drive	
C:	4638K
D:	29418K
E:	0K
F:	0K
G:	0K
H:	0K
I:	0K

b. The drive and directory name shown in this dialog box are selected by the INSTALL program in the following order depending upon available space: 1) the drive and directory set in the SET LIB statement in the AUTOEXEC.BAT file, or 2) C:\LIB; otherwise, 3) the drive with available space using a TEKMS directory (i.e., D:\TEKMS).

If the displayed drive and path entries are acceptable, click on **Continue**; otherwise, change the entries, then click on **Continue**. The following message should appear.



After a short pause, if you have not loaded Microsoft® C, which contains a LIB.EXE file, the following error message appears because the INSTALL program needs the file to check the libraries. If it doesn't appear, continue.



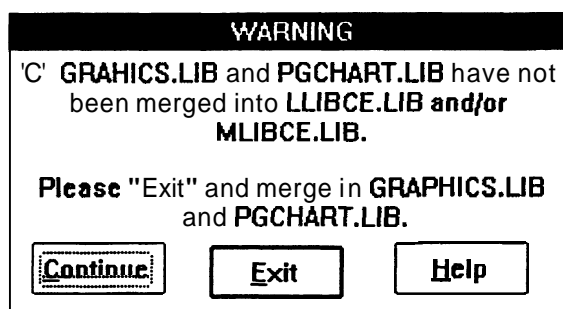
If LIB.EXE is already installed, a Microsoft Librarian utility screen message similar to the following appears to show that the libraries are being checked.

Microsoft (R) Library Manager Version 3.17
Copyright (C) Microsoft Corp 1983-1990. All rights reserved.

Note

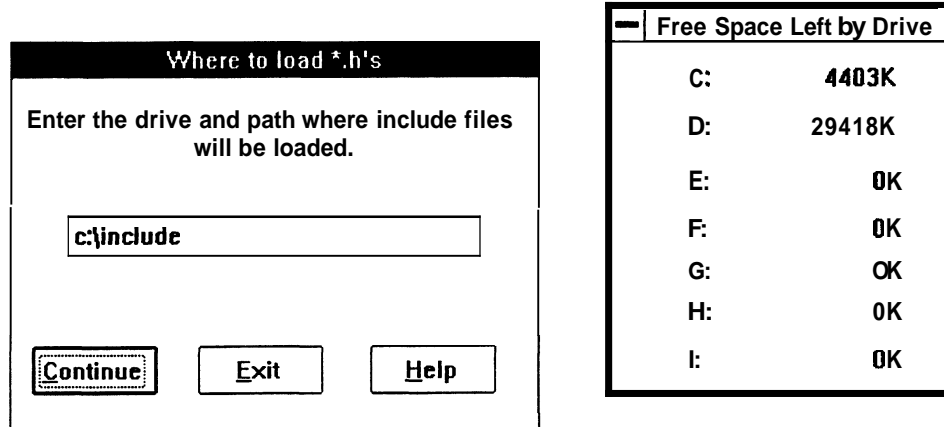
The version number and copyright dates may be different on your display.

If you did not merge the 'C' files GRAPHICS.LIB and PGCHART.LIB into LLIBCE.LIB and MLIBCE.LIB when you installed Microsoft® C, the following error message appears.



If this message appears, exit the INSTALL program and merge the files. The READ.ME file on S3FT110 Disk 1 contains information on how to merge the files when Microsoft® C already has been loaded. If this message doesn't appear, continue.

If none of the file checking error or warning messages appear, the following 'Where to load *.h's' dialog box should appear.



c. The drive and directory name shown in this dialog box are selected by the INSTALL program in the following order depending upon available space: 1) the drive and directory set by the SET INCLUDE statement in your AUTOEXEC.BAT file, or 2) C:\INCLUDE; otherwise, 3) the drive with available space using a TEKMS directory (i.e., D:\TEKMS).

If the drive and path entries are acceptable, click on Continue; otherwise, change the entries, then click on Continue.

Return to step 18 under the *Installation* Questions Dialog Box Displays topic.

Index

!

#include Files	3
.EXE	13, 18
.H	3
.LIB	3, 18

A

AUTOEXEC.BAT	3, 5, 10, 17, 19
--------------	------------------

B

Bus Communications Drivers	2
----------------------------	---

C

CDS	2-3
Controllers	2

D

Dialog Boxes	1-17, 19
Autoexec.bat	10
Free Space Left by Drive	17
GPIB ISD Selection	15
GPIB Runtime Versions ISD Selection	16
Help	1-2, 4, 12
Insert product diskette	7
Installation Complete	11
No ISDs have been selected	13-14
Selected ISDs	13-16
View READ.ME Files	6
VXI ISD Selection	13
VXI Runtime Versions ISD Selection	14
Where to install from	6
Where to load *.exe's	12, 17
Where to load *.h's	19
Where to load *.lib's	17
Where to load ISDs	14, 16

E

Environment Selection	23, 12
Error Message	18
Exiting INSTALL	4

G

GPIB.COM	2-3
GPIB.DLL	2

H

Help	1-2, 4, 12
------	------------

I

Imbedded Controller	3
Installation	
Detailed	1-2, 5
Overview	5
Product Information	2
Questions	2-3, 5, 7-9, 12-17, 19
Quick	1
Installation Complete Dialog Box	10-11
Instrument Driver Library	2-3
ISDs	2-3, 9, 13-16

L

LIB.EXE	18
LLIBCE.LIB	18

M

MLIBCE.LIB	18
------------	----

N

NOTEPAD	1, 79
---------	-------

P

PGCHART.LIB	18
Product Selection	1, 5
Program Manager	1, 5, 11

R

READ.ME	1, 5-9, 19
Runtime Library	3

S

S3FT100	2-3, 7-9, 12, 17
S3FT110	3, 7, 9, 10, 17, 19
S3FT200	2-3, 7, 9, 13
S3FT300	2-3, 9, 15
SET INCLUDE	19
SET LIB	17

T

TEKBAT.NEW	3, 10
TEKISD3, 14, 16

V

VXI2-3, 9, 13
---------------	-------------

W

Warning Message18
Windows1-5, 7, 11
Enhanced2-3
Real2-3
Standard2-3

